



# Skydesk Shipping ERP

(NVOCC, Agency & Forwarding)

[www.openwngsit.com](http://www.openwngsit.com) | [support@openwingsit.com](mailto:support@openwingsit.com) | +91 9664586323



## ABOUT THE PRODUCT

Skydesk Shipping ERP is a full fledged ERP system developed by Open Wings Infotech. It has modules for NVOCC, Shipping Agents and Freight Forwarders. It integrates the Shipping Line, Agents, Depots, Shippers & Consignees.

It offers features to manage the shipments right from the start i.e accepting the booking from the customer to delivery of the shipment at the destination.

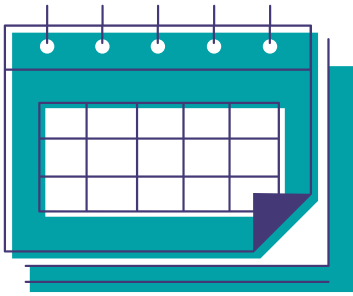
Major features include Create bookings, manage documentations like Booking Confirmation, CRO, BL, NOA etc. It also includes an advanced accounting system to cater all your accounting needs.

The goal of the product is to make the business paperless

# PROBLEM

Problems faced by Traditional Businesses





### **Heavy Paperwork**

Lots of paperwork for each booking and managing them becomes troublesome at time and could lead to heavy penalty from vendors or government agencies if mishandled.

There is no easy tracking of the progress of these documentation and one has to depend on a single staff to track them.

### **Unavailability of Real-Time Inventory and Reporting**

Inventory is maintained in Excels and mostly maintained by a single person. So heavy dependency on that person. Any mistake or loss of data could cause a heavy impact on business.

Absence of real-time reports hampers timely decision making.

### **Heavy Resourcing Cost & Constant Monitoring**

Business with less digital infrastructure often suffer from this issue. With the growth in business, staffing and workspaces needs to be increased which increases the cost of operations and also constant monitoring of the resources are required.

On-boarding of new resources becomes cumbersome at time since there is no single point of truth and it increases the on-boarding time effectively increasing the operational cost

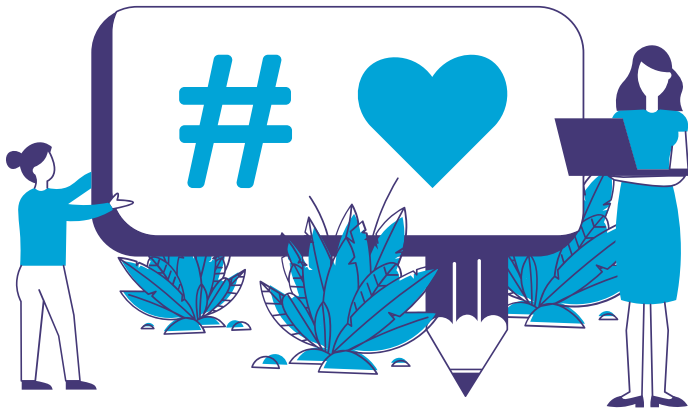
### **Untimely Customer Service**

Since everything is offline, customers have to depend on the staff for any kind of service. This can happen only during business hours. After business hours, it become difficult to serve customers with the information they request.

# THE UTOPIA

How does our software solve these problems





### **Improved efficiency and productivity**

It takes an employee an average of 12 minutes to find the paper document they are looking for. With a well-executed digitalization and document imaging plan, this can be reduced to a few seconds or less. Document Imaging allows the stake holder ability to exchange and access documents in seconds, reducing the turnaround time further increasing the efficiency for your business.

### **Data and Documents availability**

Documents that have been converted to digital scan and the crucial business data can be easily accessed through the cloud using any device that has internet, anywhere or anytime.

### **Better decision-making**

Digitization goes hand in hand with data management, data is knowledge, and knowledge leads to better decisions. Reports are available real-time which facilitates better and timely decision making

### **Decreased Resourcing Need**

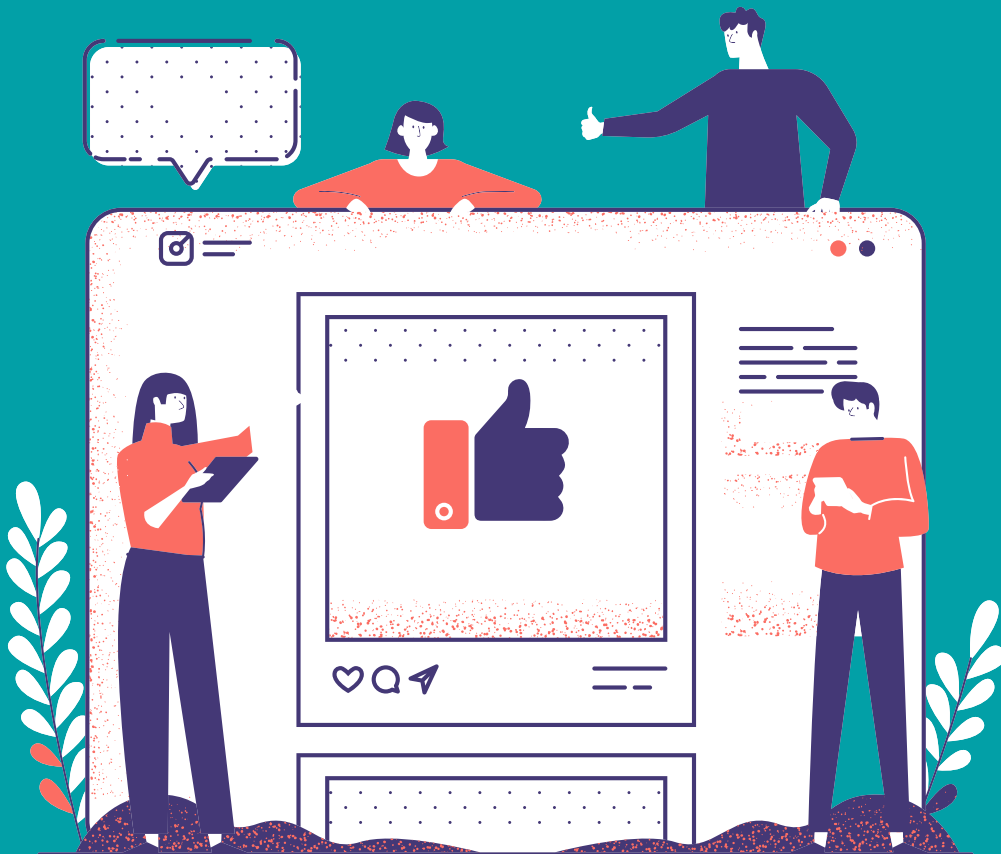
With software implementation, the system can effectively work on behalf of many employees in-turn reducing cost of resourcing and office space. Also the need to keep a close watch on the resources is reduced as they system tracks all the activities and notifies if things doesn't happen on time

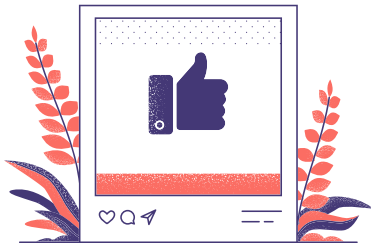
### **Single Point of Truth**

As the data is managed centrally through the software, there is always a single point of truth. Any change in the data in instantly available to everyone interested in that data. Absence of any resource will not hamper any business activity.

# Skydesk Shipping ERP

Features our product offers





## Product Highlights

- Built with one of the best web technologies available today.
- Superfast loading of data and page navigation as it uses AJAX technology to fetch data from server and display to the user.
- No hassle of setting-up and managing server. The portal will be hosted by us with state of art monitoring and twice daily regular backup of data.
- Web enabled can be used 24x7 from anywhere in the world
- Friendly user interface
- Data security and centralized database
- Unlimited users and data storage (Containers, Customer data, Agents, depots and other business data)
- User and user Group security feature to control user's access to the system. Different user group viz. Customers, Agents, Depot users have different screen/data access
- Export of reports in csv, PDF formats
- Robust Audit Trail mechanism to track and maintain who updated the data and when

## Export Operation Module

- Booking Management
- Generate and issue Container Release Order
- Update & Track container movement and booking status
- Generate, print & issue BL
- Amend and re-issue BL
- Generate & Issue Invoice and maintain payment records
- Update Tasks on completion
- Track shipment on website for general public (for website visitors)
- Upload documents
- View history of the booking
- Auto mail notifications to the interested parties



## **Import Operations**

- Pre Alert to POD Agent / POD Empty Yard
- Import planning. Track port-out, CFS-in, CFS-out, Depot-in.
- Generate and release Delivery Order
- Generate and release Import invoice
- GST ready auto invoicing based on the tariffs entered by the principal for the agent
- Detention Invoice generation based on configured slabs
- Accept and maintain payment records
- Update tasks on completion

## **Transshipment Operations**

- Planned Transshipments, Arrived Transshipments & Departed Transshipments
- Idling days at Transshipment port
- Vessel Planning
- View/Add booking notes
- Update Arrival & SOB from Transshipment Point
- Update tasks on completion

## **Accounting**

- One click generation of invoice based on the default charges configured in masters
- Main Invoice, Repair Invoice, Detention Invoice, Repair Invoice
- Detention invoice auto calculation with detention slabs configured at the master per agent wise
- Accept payments and link to invoice
- Record expenses like port expense, slot expense etc and link to booking
- Release payments and record the same.
- List of unsettled invoices and expenses reports
- All standard accounting features including Balance Sheet, P&L, General Ledger, Receivables, Payables etc.
- Bank Reconciliation

## **Switch BLs**

- Generate Switch BL
- Switch at any port and any agent
- Online editing of Switch BL

## **Depot Operations**

- Depot Portal
- Container inventory at Depot
- Container History
- Container repair estimate and approval process
- Upload Pre & Post Repair Pictures

## **Admin Activities**

- Manage Users
- Configure Local Charges & Tariff for each Agent
- Configure Detention Slabs
- Create Master Data
- View Consolidated Inventory, Booking, Invoice, Expenses from all locations
- View Export, Import, Transshipment & Depot SOA for all the locations

## **Customer Login**

- Shipper & Consignee Login
- View booking related details and print CRO
- Fill SI and Print BL
- Upload documents
- View & Print invoices and payment records
- View history of all bookings till date

## **Surveyor Login**

- View list of all bookings assigned to him
- View CRO & Invoice details
- Upload booking related documents

## **Reporting**

- Real-Time inventory reporting
- Idling Containers
- Mail Alerts for unfinished tasks
- Booking-wise margin in Export & Import
- Export SOA
- Import SOA
- Transshipment SOA
- Depot SOA

## **General Features**

- Real-time Inventory Report – Location wise / Agent wise / Status wise
- Real-time container Idle time report
- Public & Private notes on booking level to keep a note and share with the POD agent
- Export data in csv format to open in excel for manual data analysis
- Upload files like agency contract, container pictures, shipping bills, scanned copies etc.
- Controlled automated graphical emails to customers, agents and depots on booking/shipment update
- Ability to change text and graphic in mail template
- Auto backup of database twice daily

## **Security & Access Control**

- Separate server for the database and files secured with cryptographic key pairs
- Systematic disaster recovery in case of crash or any other unforeseen events from the backup
- Access pages/features based on the system rights given to the users
- Hide an agent's customer list from other agents

**THANK YOU**